

## How to Enable Transport Layer Security (TLS) 1.2

### Basic TLS 1.2 compatibility Chart

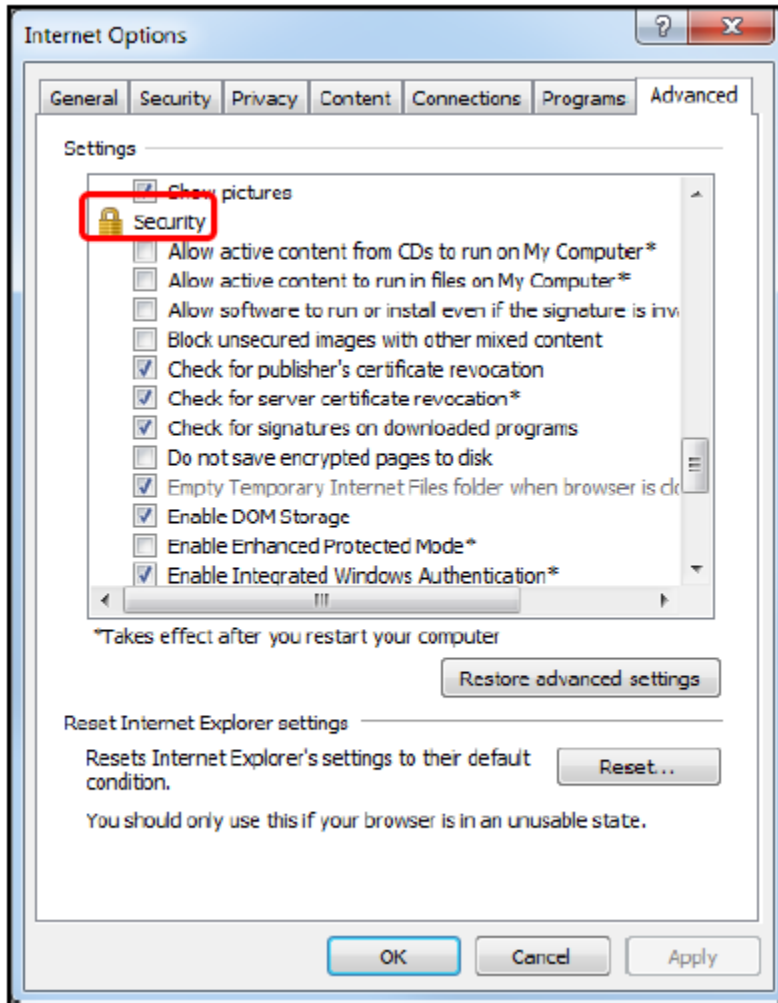
Browsers and Operating Systems	TLS 1.2 Compatibility Notes
Microsoft Edge	Compatible by default
Microsoft IE Desktop and mobile version 11	Compatible by default
Microsoft IE Desktop versions 9 and 10	Capable when run in Windows 7 or newer, but not enabled by default
Firefox 27 and higher	Compatible by default
Google Chrome 38 and higher	Compatible by default
Oracle Java version 1.7 and higher	Compatible by default
Mobile Safari versions 5 and higher	Compatible by default
Microsoft Windows Server 2008 R2 and higher	Compatible by default
Microsoft Windows Server 2008 and below	Not compatible with TLS 1.2
Microsoft Windows 7, 8.0, 8.1 and 10	Compatible by default
Microsoft XP/Vista and below	Not compatible with TLS 1.2

## How to Enable Transport Layer Security (TLS) 1.2

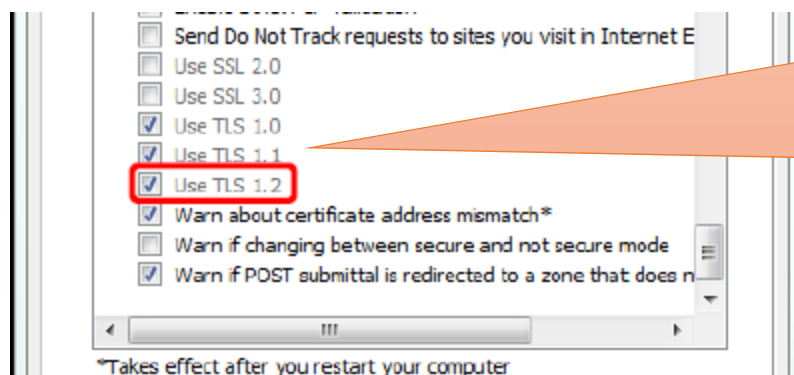
### For Internet Explorer:

To review or enable TLS 1.2 in Internet Explorer

1. From your internet browser, select **Tools**, then **Internet Options**.
2. Click the **Advanced Tab**, and scroll down to Security section.



3. Ensure TLS 1.2 is checked, if not check **TLS 1.2** and select, **Apply, OK**.



Users may opt to uncheck (disable) TLS 1.0 and 1.1 at their own discretion but please note that disabling these protocols may adversely affect access to third-party sites that have not yet enabled TLS 1.2.